

PURPOSE OF DRAWINGS
 THESE DRAWINGS ARE 90% COMPLETE CONSTRUCTION DOCUMENTS RELEASED FOR BIDDING. THEY ARE NOT RELEASED FOR CONSTRUCTION UNTIL APPROVED BY THE TOWN OF TRUCKEE. CONTRACTOR SHALL INCLUDE APPROPRIATE CONTINGENCIES TO ALLOW FOR CHANGES RESULTING FROM PLAN CHECK COMMENTS AND OTHER MODIFICATIONS TO GET TO 100% CONSTRUCTION DOCUMENTS.

STRUCTURAL SHEET INDEX	
S1.00	STRUCTURAL COVER SHEET
S1.01	GENERAL NOTES
S1.02	GENERAL NOTES
S1.03	GENERAL NOTES
S1.11	STRUCTURAL SPECIAL INSPECTIONS AND TESTING
S1.12	STRUCTURAL SPECIAL INSPECTIONS AND TESTING
S1.31	PLAN NOTES & SCHEDULES
S2.01	FIRST FLOOR FOUNDATION PLAN
S2.02	2ND FLOOR FOUNDATION AND FRAMING PLAN
S2.03	3RD FLOOR FOUNDATION AND FRAMING PLAN
S2.04	ROOF FRAMING PLAN
S2.05	ENLARGED ROOF PLANS
S3.01	BUILDING SECTIONS
S3.02	BUILDING SECTIONS
S3.11	SECTIONS
S3.16	SECTIONS
S3.41	FLOOR SECTIONS
S3.52	ROOF SECTIONS
S3.53	ROOF SECTIONS
S3.54	ROOF SECTIONS
S4.01	CONCRETE SHEAR WALL ELEVATIONS
S4.02	CONCRETE SHEAR WALL ELEVATIONS
S4.03	CONCRETE SHEAR WALL ELEVATIONS
S4.04	CONCRETE SHEAR WALL ELEVATIONS
S4.05	CONCRETE WALL ELEVATIONS
S4.11	BRACED FRAME ELEVATIONS
S4.12	BRACED FRAME ELEVATIONS
S4.21	MOMENT FRAME ELEVATIONS
S4.22	MOMENT FRAME ELEVATIONS
S4.23	MOMENT FRAME ELEVATIONS
S4.24	GENERAL NOTES
S4.25	ONE SIDED CONNECTION DETAILS
S4.26	TWO SIDED CONNECTION DETAILS
S4.27	BEAM AND PLATE DETAILS
S4.28	MISC DETAILS
S5.01	TYPICAL CONCRETE DETAILS

STRUCTURAL SHEET INDEX	
S5.02	TYPICAL CONCRETE DETAILS
S5.03	TYPICAL CONCRETE DETAILS
S5.04	CONCRETE FOOTING DETAILS
S5.05	TYPICAL CONCRETE WALL DETAIL
S5.06	CONCRETE WALL DETAILS
S5.07	CONCRETE WALL DETAILS
S5.08	CONCRETE SHEAR WALL SECTIONS
S5.09	CONCRETE SHEAR WALL SECTIONS
S5.10	CONCRETE SHEAR WALL DETAILS
S5.11	CONC SITE RETAINING WALL SECTIONS
S5.12	CONC BLDG RETAINING WALL SECTIONS
S5.20	TYPICAL STEEL DETAILS
S5.21	TYPICAL STEEL DETAILS
S5.22	TYPICAL STEEL DETAILS
S5.23	STEEL DETAILS
S5.24	STEEL DETAILS
S5.25	STEEL DETAILS
S5.31	TYPICAL BRBF DETAILS
S5.32	TYPICAL BRBF DETAILS
S5.33	TYPICAL BRBF DETAILS
S5.34	BRB ELEVATIONS
S5.35	BRB DETAILS
S5.36	BRB SCHEDULES
S5.51	TYPICAL METAL DECK DETAILS
S5.52	TYPICAL METAL DECK DETAILS
S5.53	TYPICAL METAL DECK DETAILS
S5.61	DETAILS
S6.01	TYPICAL WOOD DETAILS
S6.11	WOOD DETAILS
S6.12	WOOD DETAILS
S6.13	WOOD DETAILS
S8.00	TRASH ENCLOSURE PLANS AND DETAILS
S8.01	TRASH ENCLOSURE DETAILS
S9.00	ELEVATOR FRAMING PARTIAL PLAN AND DETAILS
S9.01	ELEVATOR DETAILS
S10.00	NANA WALL & SLIDER FRAMING AND DETAILS

ISSUE
 ISSUE FOR BIDS SET

RELEASE DATE
 12/20/23

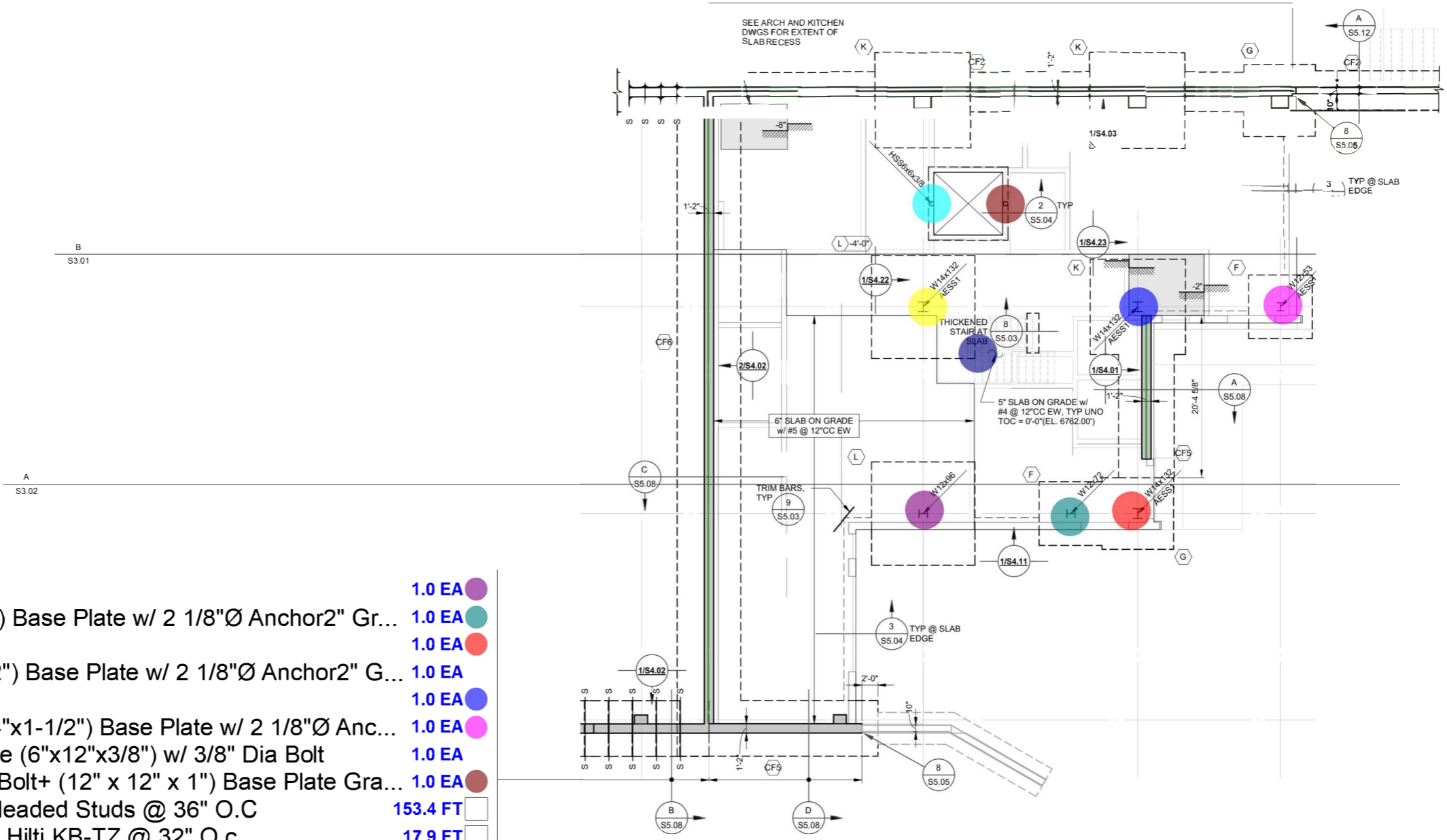
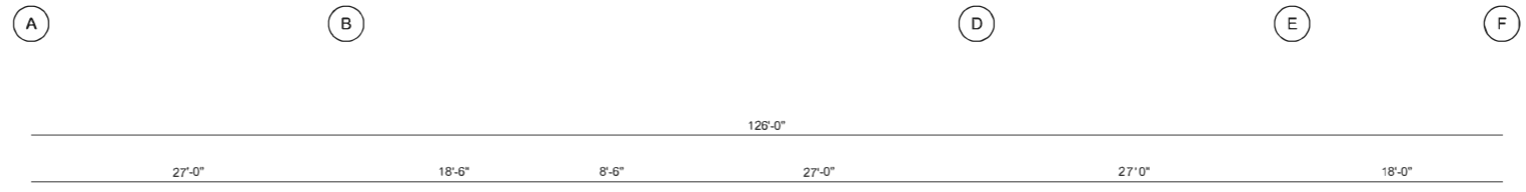
REVISIONS

PROJECT NO. 22102
 MADE BY Author
 REVIEWED BY Checker

STRUCTURAL COVER SHEET

S1.00

7
5
4.8
4
3
2



- W12x96 (40'-0" H) 1.0 EA
- W12x72 (38'-2" H)+ (22"x22"x1-1/2") Base Plate w/ 2 1/8"Ø Anchor2" Gr... 1.0 EA
- W14x132 (39'-6" H) 1.0 EA
- W14x132 (27'-0" H)+ (24"x24"x1-1/2") Base Plate w/ 2 1/8"Ø Anchor2" G... 1.0 EA
- W14x132 (35'-6" H Approx.) 1.0 EA
- W12x53 (37'-0" H Approx.)+ (14"x14"x1-1/2") Base Plate w/ 2 1/8"Ø Anc... 1.0 EA
- HSS 6x6x3/8" (25'-6" H) + Base Plate (6"x12"x3/8") w/ 3/8" Dia Bolt 1.0 EA
- HSS 6x6x3/8" (11'-6" H) w/ 3/8" Dia Bolt+ (12" x 12" x 1") Base Plate Gra... 1.0 EA
- (2) L3x3x3/8" x 18" w/ 1/2" Dia x4" Headed Studs @ 36" O.C 153.4 FT
- L4x4x3/8" w/ 3/4" Dia x4-3/4" Embed Hilti KB-TZ @ 32" O.c 17.9 FT
- (4'-0" W) Metal Prefabricated Stair (by Others)- 20 EA Treads (10" D)- 21... 1.0 EA

ISSUE
ISSUE FOR BIDS SET

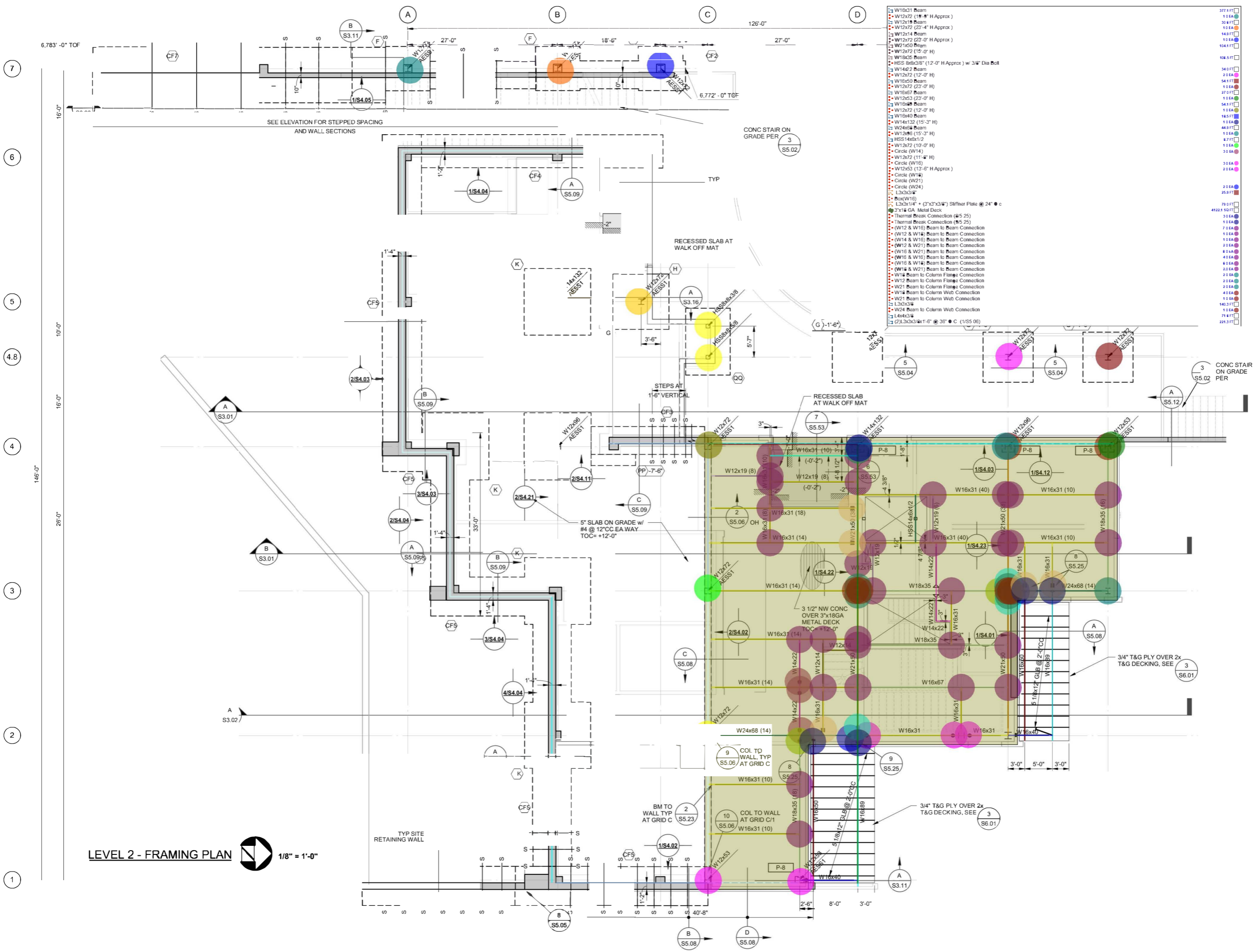
RELEASE DATE
12/20/23

REVISIONS

PROJECT NO. 22102
MADE BY Author
REVIEWED BY Checker

**FIRST FLOOR
FOUNDATION
PLAN**

S2.01



LEVEL 2 - FRAMING PLAN 1/8" = 1'-0"

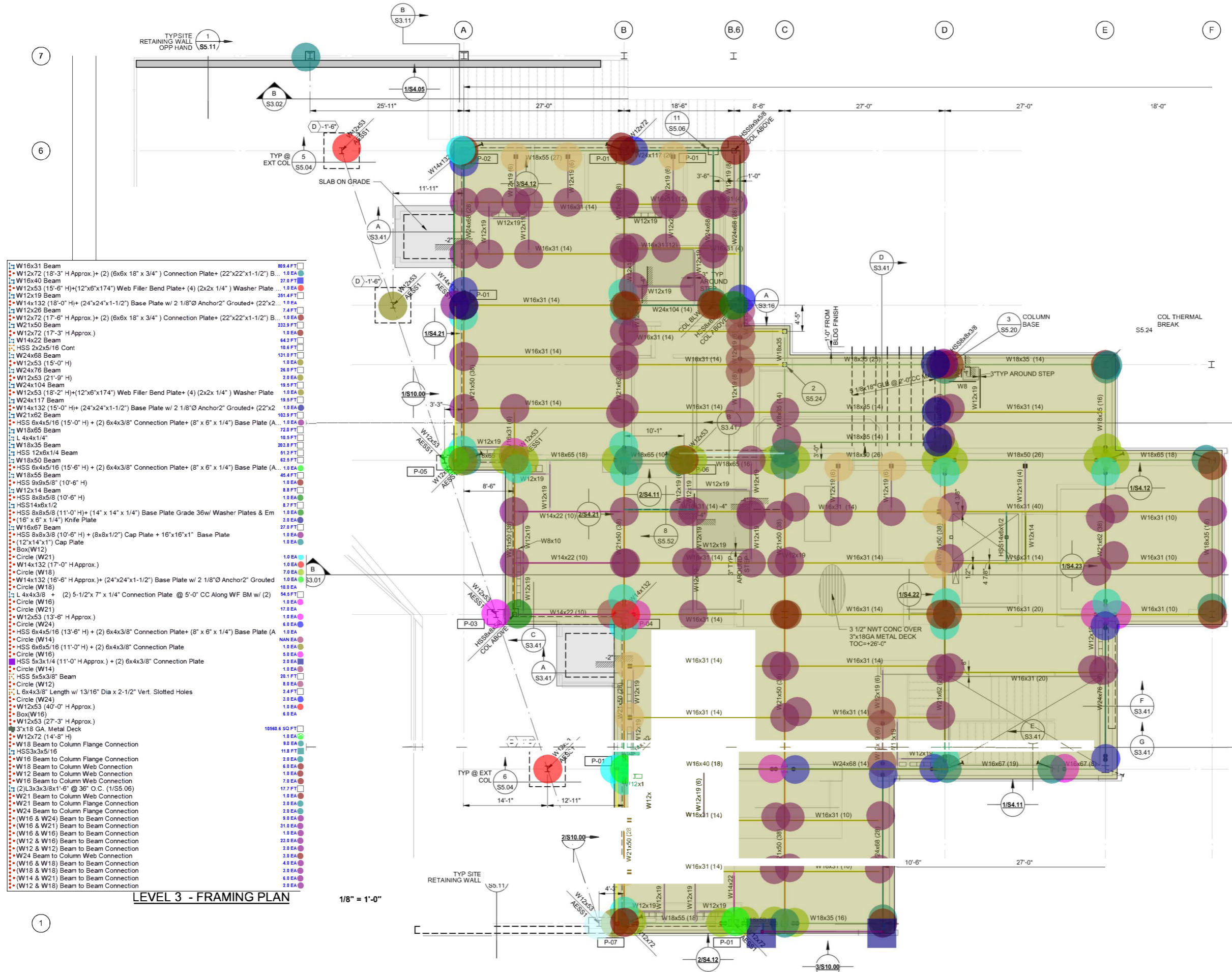
ISSUE
ISSUE FOR BIDS SET

RELEASE DATE
12/20/23

REVISIONS

PROJECT NO. 22102
MADE BY Author
REVIEWED BY Checker

**2ND FLOOR
FOUNDATION
AND FRAMING
PLAN
S2.02**



- W16x31 Beam 89.4 FT
- W12x72 (18'-3" H Approx.)+ (2) (6x6x 18" x 3/4") Connection Plate+ (22"x22"x1-1/2") B... 1.0 EA
- W16x40 Beam 27.0 FT
- W12x53 (15'-6" H)+(12"x6"x174") Web Filler Bend Plate+ (4) (2x2x 1/4") Washer Plate... 1.0 EA
- W12x19 Beam 251.4 FT
- W14x132 (18'-0" H)+(24"x24"x1-1/2") Base Plate w/ 2 1/8"Ø Anchor2" Grouted+ (22"x2... 1.0 EA
- W12x26 Beam 7.4 FT
- W12x72 (17'-3" H Approx.) 1.0 EA
- W21x50 Beam 233.3 FT
- W14x22 Beam 64.2 FT
- HSS 2x2x5/16 Cont 10.8 FT
- W24x68 Beam 131.0 FT
- W12x53 (15'-0" H) 1.0 EA
- W24x76 Beam 26.0 FT
- W12x53 (21'-9" H) 2.0 EA
- W24x117 Beam 19.5 FT
- W12x53 (18'-2" H)+(12"x6"x174") Web Filler Bend Plate+ (4) (2x2x 1/4") Washer Plate 1.0 EA
- W24x117 Beam 19.5 FT
- W14x132 (15'-0" H)+(24"x24"x1-1/2") Base Plate w/ 2 1/8"Ø Anchor2" Grouted+ (22"x2... 1.0 EA
- W21x62 Beam 102.9 FT
- HSS 6x4x5/16 (15'-0" H) + (2) 6x4x3/8" Connection Plate+ (8" x 6" x 1/4") Base Plate (A... 1.0 EA
- W18x65 Beam 72.0 FT
- 4x4x1/4" 1.0 EA
- W18x35 Beam 203.9 FT
- HSS 12x6x1/4 Beam 61.2 FT
- W18x50 Beam 62.0 FT
- HSS 6x4x5/16 (15'-6" H) + (2) 6x4x3/8" Connection Plate+ (8" x 6" x 1/4") Base Plate (A... 1.0 EA
- W18x55 Beam 45.4 FT
- HSS 9x9x5/8" (10'-6" H) 1.0 EA
- W12x14 Beam 8.0 FT
- HSS 8x8x5/16 (10'-6" H) 1.0 EA
- HSS 14x8x1/2 8.7 FT
- HSS 8x8x5/16 (11'-0" H)+(14" x 14" x 1/4") Base Plate Grade 36w/ Washer Plates & Em... 1.0 EA
- (16" x 6" x 1/4") Knife Plate 3.0 EA
- W16x67 Beam 27.0 FT
- HSS 8x8x3/8 (10'-6" H) + (8x8x1/2") Cap Plate + 16"x16"x1" Base Plate 1.0 EA
- (12"x14"x1") Cap Plate 1.0 EA
- Box(W12) 1.0 EA
- Circle (W21) 1.0 EA
- W14x132 (17'-0" H Approx.) 1.0 EA
- Circle (W18) 7.0 EA
- W14x132 (16'-6" H Approx.)+ (24"x24"x1-1/2") Base Plate w/ 2 1/8"Ø Anchor2" Grouted 1.0 EA
- Circle (W18) 10.0 EA
- L 4x4x3/8" + (2) 5-1/2"x 7" x 1/4" Connection Plate @ 5'-0" CC Along W/B BM w/ (2) 1.0 EA
- Circle (W16) 5.0 EA
- Circle (W21) 17.0 EA
- W12x53 (13'-6" H Approx.) 1.0 EA
- Circle (W24) 6.0 EA
- HSS 6x4x5/16 (13'-6" H) + (2) 6x4x3/8" Connection Plate+ (8" x 6" x 1/4") Base Plate (A... 1.0 EA
- Circle (W14) NAN EA
- HSS 6x6x5/16 (11'-0" H) + (2) 6x4x3/8" Connection Plate 1.0 EA
- Circle (W16) 5.0 EA
- HSS 6x3x1/4 (11'-0" H Approx.) + (2) 6x4x3/8" Connection Plate 1.0 EA
- Circle (W14) 1.0 EA
- HSS 5x5x3/8" Beam 20.1 FT
- Circle (W12) 8.0 EA
- L 6x4x3/8" Length w/ 13/16" Dia x 2-1/2" Vert. Slotted Holes 2.4 FT
- Circle (W24) 3.0 EA
- W12x53 (40'-0" H Approx.) 1.0 EA
- Box(W16) 6.0 EA
- 3"x18" GA. Metal Deck 10560.6 SQ FT
- W12x72 (14'-8" H) 1.0 EA
- W18 Beam to Column Flange Connection 9.0 EA
- HSS3x3x5/16 11.8 FT
- W16 Beam to Column Flange Connection 2.0 EA
- W18 Beam to Column Web Connection 6.0 EA
- W12 Beam to Column Web Connection 1.0 EA
- W16 Beam to Column Web Connection 7.0 EA
- (2)L3x3x3/8x1'-6" @ 36" O.C. (1/S5.06) 17.7 FT
- W21 Beam to Column Web Connection 1.0 EA
- W21 Beam to Column Flange Connection 2.0 EA
- W24 Beam to Column Flange Connection 2.0 EA
- W16 & W24 Beam to Beam Connection 1.0 EA
- (W16 & W21) Beam to Beam Connection 2.0 EA
- (W16 & W16) Beam to Beam Connection 1.0 EA
- (W12 & W16) Beam to Beam Connection 2.0 EA
- (W12 & W12) Beam to Beam Connection 2.0 EA
- W24 Beam to Column Web Connection 3.0 EA
- (W16 & W16) Beam to Beam Connection 4.0 EA
- (W18 & W16) Beam to Beam Connection 2.0 EA
- W14 & W21 Beam to Beam Connection 6.0 EA
- (W12 & W18) Beam to Beam Connection 2.0 EA

LEVEL 3 - FRAMING PLAN

1/8" = 1'-0"

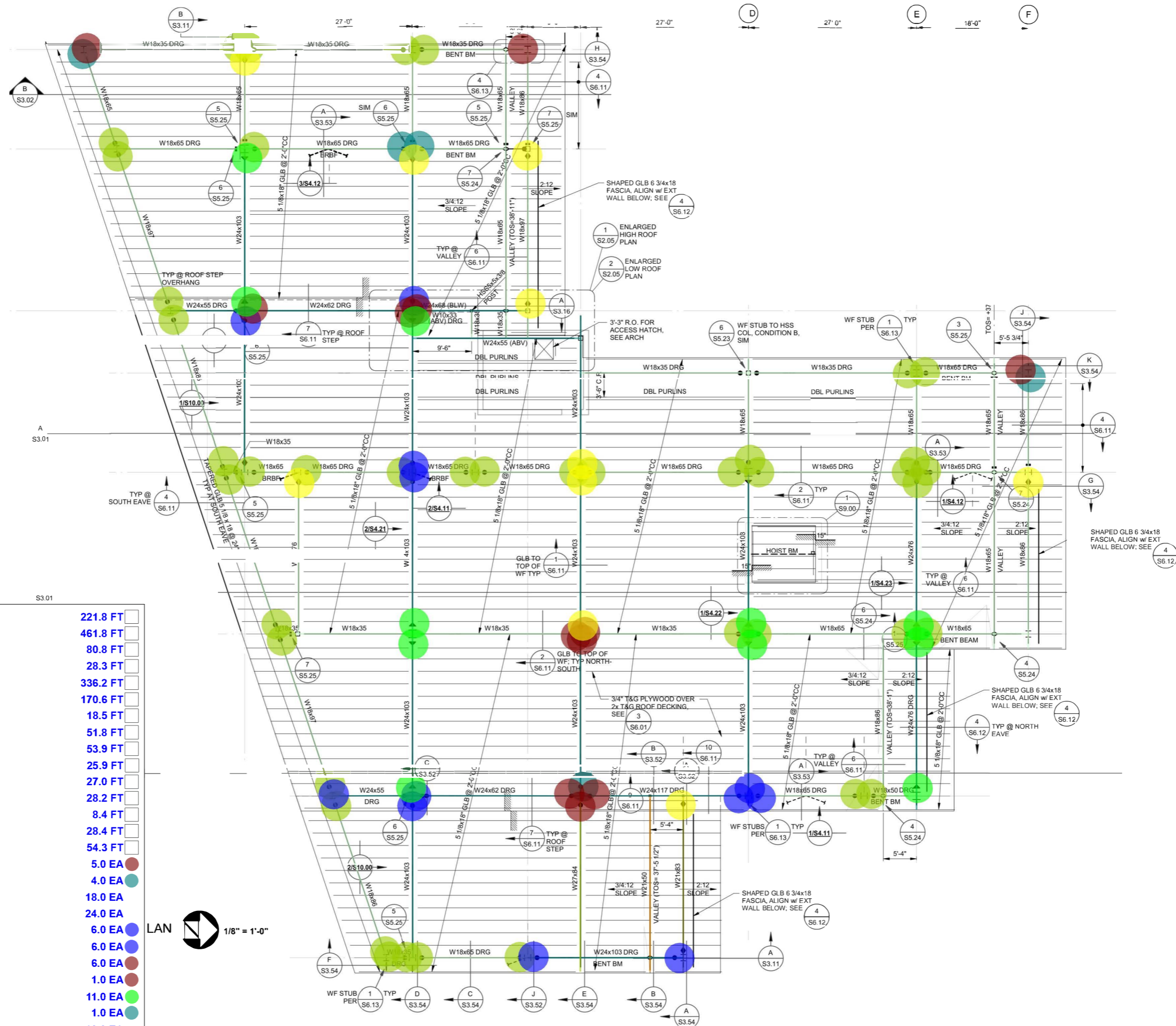
ISSUE
ISSUE FOR BIDS SET

RELEASE DATE
12/20/23

REVISIONS

PROJECT NO. 22102
MADE BY Author
REVIEWED BY Checker

**3RD FLOOR
FOUNDATION
AND FRAMING
PLAN
S2.03**



W18x35 Beam	221.8 FT	
W18x65 Beam	461.8 FT	
W18x97 Beam	80.8 FT	
W21x50 Beam	28.3 FT	
W24x103 Beam	336.2 FT	
W18x86 Beam	170.6 FT	
W24x68 Beam	18.5 FT	
W24x55 Beam	51.8 FT	
W24x62 Beam	53.9 FT	
W16x76 Beam	25.9 FT	
W24x117 Beam	27.0 FT	
W27x84 Beam	28.2 FT	
W18x50 Beam	8.4 FT	
W21x83 Beam	28.4 FT	
W24x76 Beam	54.3 FT	
W18 Beam to Column Web Connection	5.0 EA	●
W18 Beam to Column Flange Connection	4.0 EA	●
Circle (W18) - Col. Web	18.0 EA	○
Circle (W18) - Col. Flange	24.0 EA	○
Circle (W24) Flange	6.0 EA	○
Circle (W24) Web	6.0 EA	○
W24 Beam to Column Web Connection	6.0 EA	●
W27 Beam to Column Web Connection	1.0 EA	●
(W24) Special Moment Connection	11.0 EA	●
W24 Beam to Column Flange Connection	1.0 EA	●
High Shear Connections	10.0 EA	●

ISSUE
ISSUE FOR BIDS SET

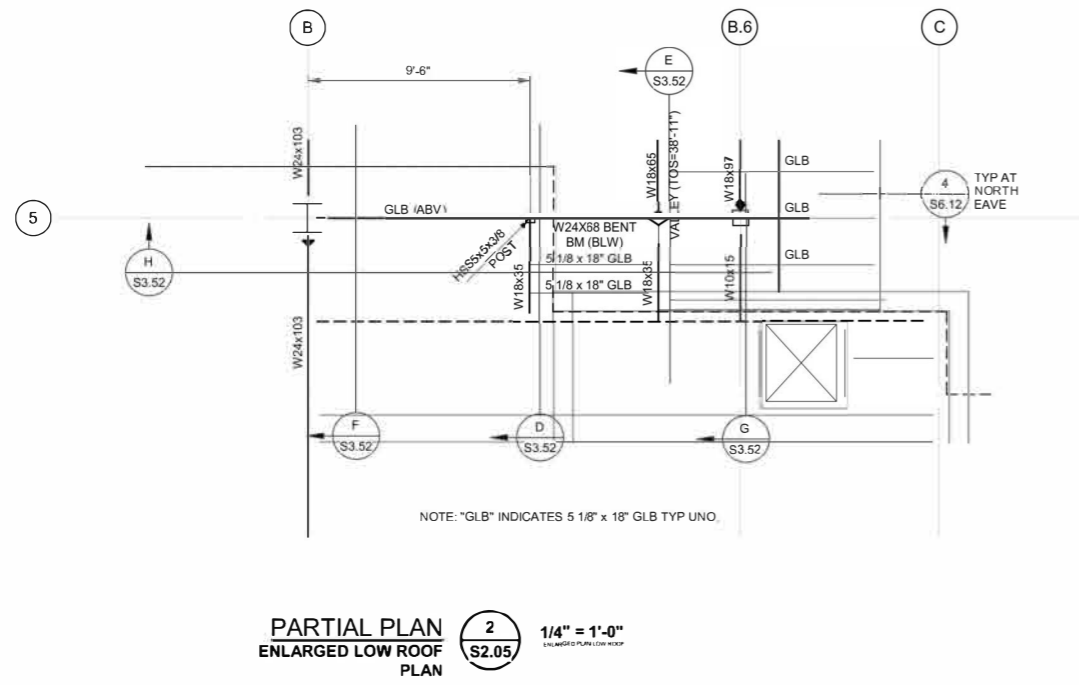
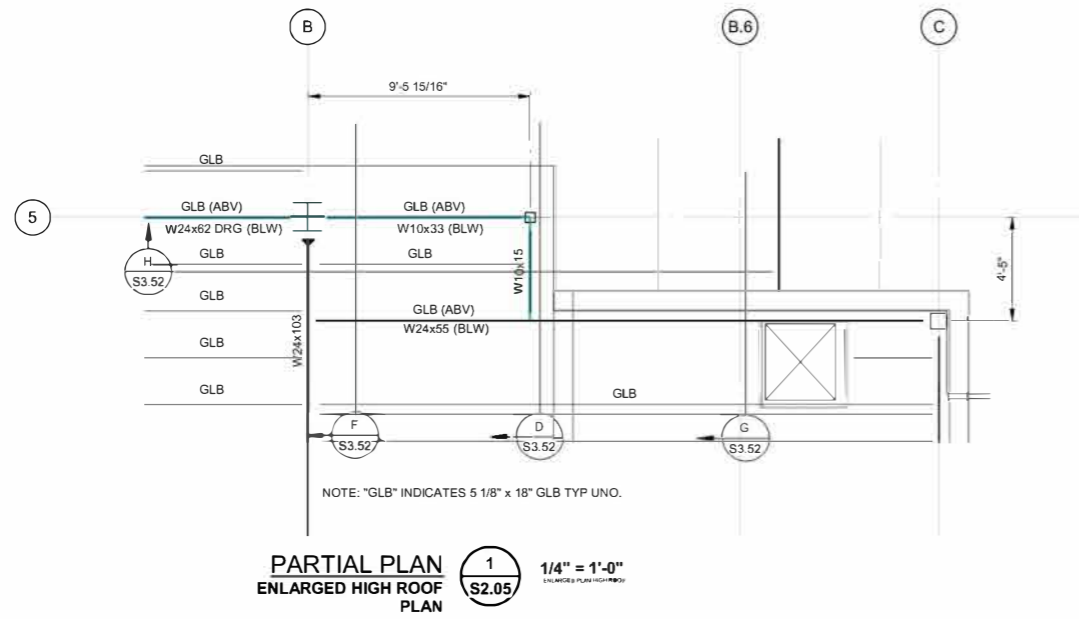
RELEASE DATE
12/20/23

REVISIONS

PROJECT NO. 22102
MADE BY Author
REVIEWED BY Checker

ROOF FRAMING PLAN

S2.04



	W24x62 Beam	7.0 FT	
	W10x33 Beam	9.5 FT	
	W10x15 Beam	4.4 FT	

ISSUE
ISSUE FOR BIDS SET

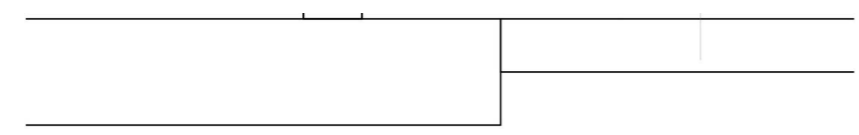
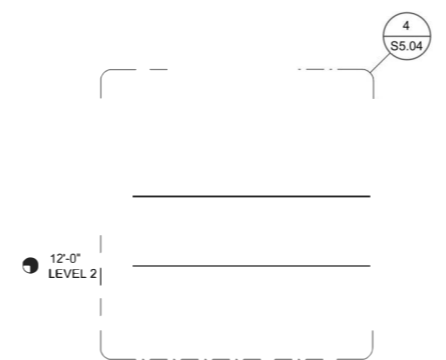
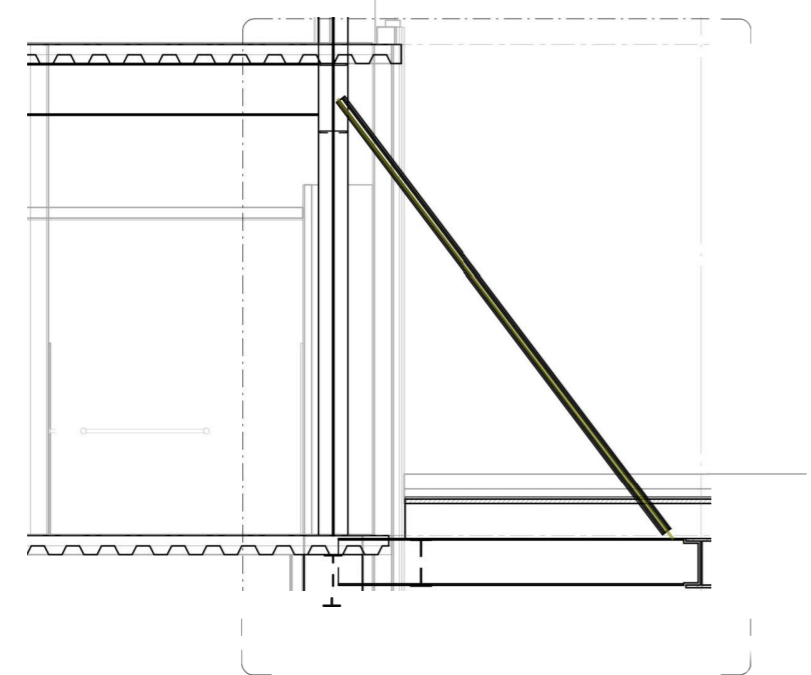
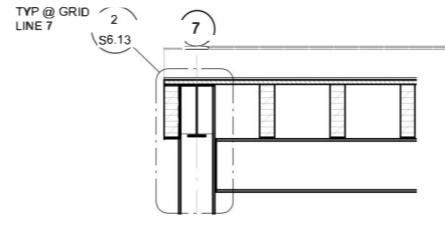
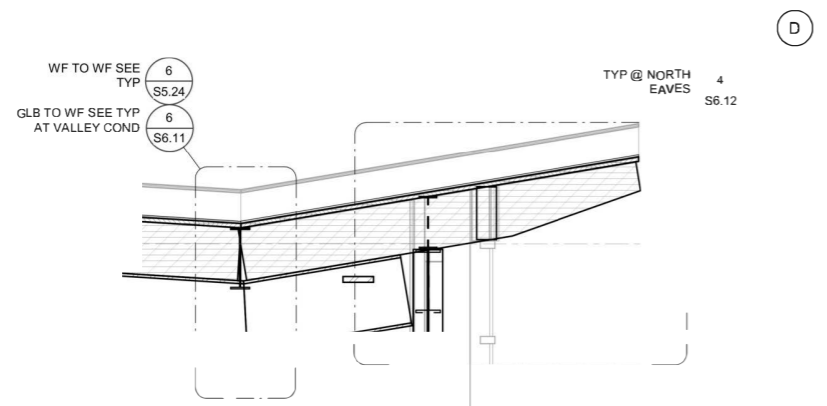
RELEASE DATE
12/20/23

REVISIONS

PROJECT NO. 22102
MADE BY Author
REVIEWED BY Checker

**ENLARGED
ROOF PLANS**

S2.05



SECTION **A** 3/8" = 1'-0"

SECTION **B** 3/8" = 1'-0"

(2) HSS 3.5 Dia x0.313 Expansion Wire **15.8 FT**

ISSUE
ISSUE FOR BIDS SET

RELEASE DATE
12/20/23

REVISIONS

PROJECT NO. 22102
MADE BY Author
REVIEWED BY Checker

SECTIONS

S3.11

***** SKI LODGE

BID RECAP

DIVISION	DESCRIPTION	MATERIAL COST	LABOR COST	MATERIAL TAX	LABOR TAX	TOTAL COST	OVERHEADS	PROFIT	ADDITIONAL COST (If Any)	TOTAL PRICE	COST/ SF
GENERAL REQUIREMENTS SUBGROUP WORK											
	GENERAL REQUIREMENTS	US\$ -	US\$ -	US\$ -	US\$ -	US\$ -	US\$ -	US\$ -	US\$ -	US\$ -	US\$ -
FACILITY CONSTRUCTION SUBGROUP WORK											
	METALS	US\$ 863,014.89	US\$ 847,371.23	US\$ -	US\$ -	US\$ 1,710,386.13	US\$ 171,038.61	US\$ 171,038.61	US\$ -	US\$ 2,052,463.35	US\$ 85
TOTALS		US\$ 863,015	US\$ 847,371	US\$ -	US\$ -	US\$ 1,710,386	US\$ 171,039	US\$ 171,039	US\$ -	US\$ 2,052,463	US\$ 85

BID SUMMARY

MAN-LOADING AND SUPERVISION ANALYSIS

1	TOTAL MATERIAL COST		US\$ 863,014.89
	MATERIAL SALES TAX		US\$ -
	JOB EXPENSE		
2	TOTAL LABOR COST		US\$ 847,371.23
	LABOR TAX		US\$ -
3	TOTAL COST		US\$1,710,386.13
	OVERHEADS @	10%	US\$ 171,038.61
	PROFIT @	10%	US\$ 171,038.61
4	TOTAL COST W/ OVERHEADS + PROFIT		US\$2,052,463.35
	BOND & INSURANCE		US\$ -
	PROJECT SUPERVISION & PROJECT MANAGEMENT		US\$ -
	SUBMITTALS, SAMPLES, SHOP DRAWINGS, SITE SAFETY PLAN, ETC.		US\$ -
	TEMPORARY FACILITIES & CONTROLS		US\$ -
	PROJECT SCHEDULE (Primavera P3 or P6)		US\$ -
	OFFICE OVERHEADS		US\$ -
	CLOSEOUT PROCEDURES		US\$ -
	PERMITS		US\$ -
	ALLOWANCES		US\$ -
	MOBILIZATION / DEMOBILIZATION		US\$ -
	SUB-CONTRACTS		US\$ -
	BOND PREMIUM		US\$ -
5	BASE BID PRICE		US\$2,052,463.35

1	TOTAL MANHOURS WITH SUPERVISION		6,779
2	NUMBER OF MAN-DAYS		847.37
3	MAN LOAD		5
4	JOURNEYMAN RATE	3	
5	SUPERVISOR RATE	1	
6	UNSKILLED LABOR RATE	1	
7	COMPOSITE LABOR RATE		US\$ -
8	WAGE RATE		US\$ 125.00

INSERT VALUES IN YELLOW HIGHLIGHTED CELLS WHERE APPLICABLE

Project GSF: 24210 SF



***** SKI LODGE

11603 SNOWPEAK ***** CA *****

PROJECT COST US\$ 1,710,386.13

OVERHEAD COST US\$ 171,038.61

PROFIT COST US\$ 171,038.61

ADDITIONAL COST (if Any) US\$ -

TOTAL BID COST US\$ 2,052,463.35

5900 Balcones Drive, Suite 100, Austin, TX 78731
projects@bidsmarterestimates.com
+17373076620

Project Scope: Steel Structure
Addendum: N/A
Date: Monday, October 28, 2024

Main table with columns: SR. NO., DWG. NO., DETAIL NO., CSI NO., DESCRIPTION, QUANTITY, UNIT, WASTAGE %, QTY W/ WASTAGE, UNIT MATERIAL COST, MATERIAL COST, MAN HOUR RATE, UNIT MANHOOURS, TOTAL MANHOOURS, MANHOOURS COST, TOTAL COST. Includes subgroups for GENERAL REQUIREMENTS, FACILITY CONSTRUCTION, and METALS.

Summary table with columns: SUBTOTAL MATERIAL, TOTAL MATERIAL, SUBTOTAL LABOR, TOTAL LABOR, SUBTOTAL HOURS, TOTAL HOURS, TOTAL MATERIAL COST, TOTAL LABOR COST, TOTAL LABOR HOURS.

Notes: 1 Online sources are used for pricing purpose. Please verify, as per your own convenience. 2 Prices can vary, depending upon field conditions. 3 All other prices are excluded that are not included in the estimate above. 4 Cells highlighted with green, please price the items as per your own facility.